



Home in PA Visiting

What is Home Visiting?

Evidence-based home visiting (EBHV) programs help parents and others raising children with the supports necessary to improve health, safety, literacy and family self-sufficiency.

How does it work?

Pregnant women and families voluntarily participate in visits that promote parents' ability to support a child's growth and development. In 2020, six EBHV models were operating in Pennsylvania using public (state and/or federal) and private funds to support their programs. Each model has distinct characteristics and meets families' unique needs in different ways:



Early Head Start



Family Check-Up®



Healthy Families America



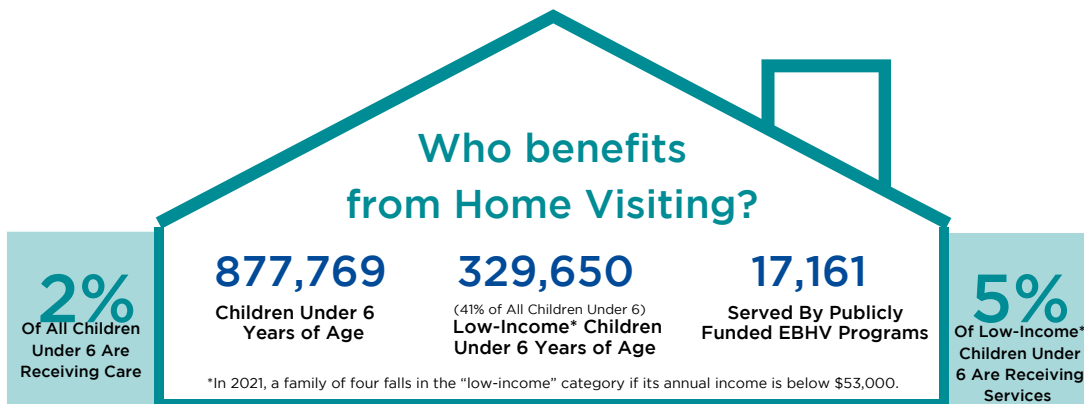
Nurse-Family Partnership



Parents As Teachers



SafeCare Augmented®



Does Home Visiting Work?

"Evidence-based" refers to home visiting models whose services are proven effective by research with evidence, evaluated and documented by the U.S. Department of Health & Human Services, that supports a child's healthy development.

YES